

# IASW NEWSLETTER

## December 2020



---

Dear Marina, welcome to the Winter edition of IASW Newsletter,

It seems like no time at all since I did a note for the last newsletter! Time seems to slip away when we are unable to mark life with the usual transitions, events and breaks to routine by way of social events and holidays.

IASW are busily engaged in a number of key strategic areas of work on your behalf. Member response and engagement has been very encouraging as we seek to raise the visibility and influence of the profession nationally, in key agencies and key areas of social work concern. I thank all for your commitment, input and effort.

This continues to be a tough time for all social workers. Some will have very direct experiences of the utter sadness and despair that Covid 19 has brought to many of the clients we work with. Service users are experiencing increased mental and physical health needs. Death and dying occurs without the expected rituals and support systems. Domestic violence has increased as all are more confined to their homes, and many people have a sense of anomie as social, employment, cultural and personal freedoms are changed utterly. This crisis strikes at the very core of what it is to be human, so more than ever we must take care of each other and be even more alert to the needs of the vulnerable.

Christmas is coming! Please take time to rest and recover and in what ever way you can reach out.

**Stay well and thank you for your continuing support. Please spread the good news that**



***Life is simple  
You get what you put in***



---

At the end of this strange and exceedingly challenging year, I want to thank Áine McGuirk on my own behalf and that of the Board for all her work and efforts for the Association. As the leader of the IASW, she has overseen the unprecedented growth in our membership numbers and has inspired members to engage creatively and energetically with the many difficult issues that face social work and the people who use social work services. Such engagement has raised the profile of the Association and the social work profession. I've no doubt that we will continue to develop and strengthen our profession and our advocacy for human rights and the promotion of social justice in 2021.

**John Brennan**  
**Vice-Chair, IASW Board**

---

## **Irish Social Worker Journal**



**Keep an eye on your letter box,** the 2020 Irish Social Worker Journal will be delivered to your home the week of December 14<sup>th</sup>

---



### Call for Articles - Celebrating 50 years of Irish Social Work

In 2021, The Irish Social Worker will publish a special issue of the journal to mark the 50th Anniversary of IASW. We are looking for articles that explore the development of IASW over the past 50 years and the contribution it has made to social work practice and research in Ireland. We would like to hear from authors who have contributed to past editions of the journal to reflect on changes to the profession. We are also interested in articles that provide insight into all areas of social work practice, research and education. Interested authors should submit their abstracts. Based on the abstracts, a selection of authors will be invited to submit full articles which will undergo peer review.

Please submit your abstract in a word document of one A4 page containing:

- Suggested title
- Abstract (max 300 words)
- Name of all authors with affiliations
- Email address.

Please send your document by **COB 15th of February 2021** via email to the Journal Editor at: [journaleditor@iasw.ie](mailto:journaleditor@iasw.ie) and state "IASW Anniversary Issue Abstract" as your subject line.

Past Editions of The Irish Social Worker

## Winners of the IASW Membership Survey Give-Away



We want to send a **huge thanks** to all of the members who participated in the recent membership survey. We received an overwhelming response with **412 members** completing the survey. The feedback is being analysed by our Marketing Consultant and the results will be

shared with the members no later than mid-January. Keep an eye on our website and social media accounts for updates.

## Congratulations to our Prize Winners

- 1<sup>st</sup> Prize – One Year Free Subscription to IASW
- **Winner: Emer Lynch**
- 2<sup>nd</sup> Prize - €100 One-4-All Voucher
- **Winner: Carrie Richardson**
- 3<sup>rd</sup> Prize - €50 One-4-All Voucher
- **Winner: Loretto Reilly**

We really appreciate your participation in this important survey, as your voice guides us

## Successful Growth of the IASW Membership



For the first time in the history of the IASW, we have succeeded in recruiting over 1400 members! Our current membership figures stand at **1410 members!** Thank you very much to the Board, Council, many Volunteers and Staff team for the wheelbarrow of work that is being carried out by you all on a weekly basis. Your dedication and commitment to the IASW has contributed to the successful growth of our membership. Well done and a **HUGE** thanks to all involved.



### Community Matters More Now Than Ever. Let's Grow Our Professional Community

Let's get others to join our community of more than 1400 social work professionals committed to the highest standards of practice and ethics.

### Do You Want to Help the IASW Build a Thriving Professional Community?

All you have to do is **encourage one of your colleagues to join the IASW today.** For every

member you recruit, the IASW will enter you into a draw to win:

1 of 3 €200 euros one-4-all vouchers or a one-year free subscription to the IASW (you decide)

You have until **February 28<sup>th</sup>** to recruit as many members as you can. Each member you recruit represents one entry into the draw. The draw will take place on March 1<sup>st</sup>. Prize winners will be contacted no later than March 3<sup>rd</sup>. T&C's apply, see the link below for more information, and full the terms & conditions.

Let's Grow the IASW - Refer a Friend Giveaway

## New Card Payment System & PCI Compliance



**If you have joined or re-joined the IASW after June 2020 or you have already re-entered your card details on system since October 2020, please disregard the below**

We have upgraded our Card Payment System to comply with data security requirements within GDPR, the new EU directive regarding the PCI DSS (Payment Card Industry Data Security Standard).

What does it mean for you?

- We will protect your personal information with the security we have had for past years but with even further and enhanced critical protective measures.

**All members must be moved to the new system**

How we achieve that?

- All members must re-enter their card details on our webpage to be moved to the new system.
- Details must be re-entered even if they have not changed, if you have already paid your 2020 membership and/or if the next payment is not due until 2021.

How to update your details:

- Login: use the link below to the members login area of the webpage.

Issues logging in?

- EMAIL [administrator@iasw.ie](mailto:administrator@iasw.ie)
- CALL 086 024 1055

Members Login

## Important Information



### Christmas Closing Dates

The IASW Office will be closed on **Monday 21<sup>st</sup> December 2020** and will reopen on **Monday January 4<sup>th</sup> 2021**. The IASW would like to wish you and your family a very Merry Christmas and Happy New Year.

# AGM

Annual General Meeting



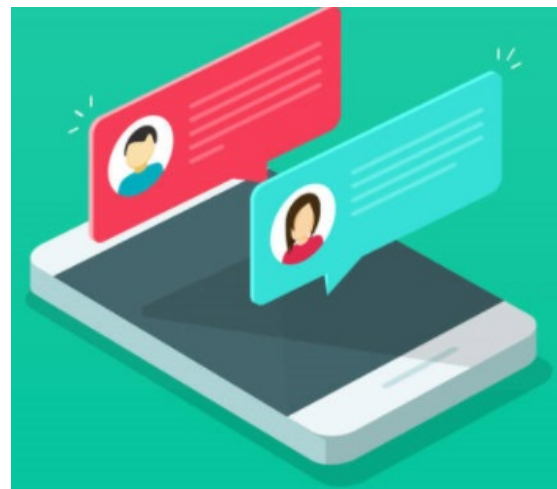
### Save the date

The **50<sup>th</sup> IASW Annual General Meeting** will take place on Wednesday 26<sup>th</sup> of May 2021 at 5pm via Zoom. Keep an eye on the website for information on the National Social Work Conference 2021.



### Help us keep your information up to date!

The IASW Office is always working to keep the database up to date in order to provide a better service. We encourage all members to login with their email and password and **keep their information up to date**. **DON'T MISS OUT** on important emails and on the next edition of the "The Irish Social Worker" 2020 coming out in mid-December. If you can't log in or you need to change



### IASW Mobile Phone

To provide a better customer service, flexibility, and increase our ability to communicate in and out of the office with our members, we have been operating a mobile phone service over the last number of months. This allows us access to other more modern means of communicating such as **SMS** or **WhatsApp**.

Due to the success of the mobile phone service, the landline service has become redundant. From the **1<sup>st</sup> of January 2021**,

membership category, **contact the Office Administrator** and let us know.

Members Login

the office landline 01 677 4838 will be permanently closed. You can continue contacting the Office Administrator as usual on our new mobile phone **086 024 1055** Mondays to Thursdays 08:30 – 16:30 and Fridays 08:30 – 16:00.

## IASW Social Work During Covid-19 Survey



The final report of the **IASW Social Work During Covid-19 Survey** is now available to download from the link below. The report presents the data collected during phase two of Reopening Ireland/Easing Lockdown Restrictions (9th - 29th June), the third and final phase of data collection of the IASW Social Work During Covid-19 Survey and compares the findings across the three phases. A very big thank you to all of you who took the time to tell us what was happening. The IASW have used the survey findings to inform and guide the work of the Association and will provide a further update on how we will continue to respond to what you told us.

Covid-19 Ongoing Survey

## IASW Online Events and Training October - December 2020

IASW Past Events

### I'm a Child First ... Collaboratively Working to Support Children with Disabilities

This conference was held via zoom on the 16th of October with almost 200 people signed up to attend. The event was designed to capture professionals from a variety of disciplines, to learn from one another and to draw on the experiences of the speakers. The aim of the webinar was to explore and develop our understanding of collaborative work to help children reach their full potential. Guest speakers were Niall Muldoon (Ombudsman for Children), Katherine O'Leary (Parent of a child with a disability), Conor Powell SC, Dr. Jeothy Damodaran (Consultant Psychiatrist CAMHS), Bernard Gloster (CEO of Tusla) and Caroline Canton (National Programme Co-Ordinator, PDS). The full event and individual sessions have been uploaded to the IASW

## Building Professional Resilience - Finding Spaces

The 3rd Building Professional Resilience - Finding Spaces training of the year consisted of a three-day online course facilitated by Niamh Bruce offered between the 7th and 21st of October. Its purpose was to introduce social workers to mindfulness and meditation practices. Those practices can act as genuine supports in the art of building resilience, enhancing listening and communication skills and sustaining overall wellness, intertwining them into existing routines. The course includes discussion, theory, and experience of practice to nourish and replenish your body and mind.

---

## The Assisted Decision Making (Capacity) Act 2015

The 4th and last Assisted Decision Making training of the year, started the 2nd of November and was delivered using a blended approach. Participants were invited to complete a 10 hour online learning course over a four week period until the 30th of November. Secondly, the participants were invited to partake in a 3 hour Zoom meeting. This course provided participants with the knowledge and skills required to implement the Assisted Decision Making (Capacity) Act into everyday practice. This course was facilitated by Josephine McLoughlin who has over 20 years' experience as a Social Care Leader in the social care sector.

---

## Talktime Online

During 2019 the IASW organised 12 Talktime sessions. The last Talktime session on Anti-Racist Practice in Social Work co-hosted by Colletta Dalikeni and Evelyn Oboh, took place on the 14th of October. The Talktime sessions started in April, as an initiative from the CPD Coordinator, Cliona Muprhy and Board member, Hilda Loughran, who decided to use Zoom to bring together social workers and discuss how they were coping and adapting to the different ways of working. All the sessions have been very well attended and have worked as a way of supporting each other and sharing issues and ideas. We thank all those who participated in the all the Talktime sessions of 2020.

---

## IASW 50th Anniversary



In 2021 the IASW will have its **50th anniversary!** We are looking for any photographs of IASW social work events over the past 50 years. We would be very pleased if we could borrow them. We also welcome stories that you would like to share, items and historical material of any



kind. Please contact the office at: [administrator@iasw.ie](mailto:administrator@iasw.ie) to arrange collection or you can send them via email if you have them in electronic format. Thank you very much in anticipation.

---

## Submissions and Advocacy

Since March 2020, there have been a variety of submissions advocacy, and communications with the HSCPA, Law Reform Commission, Tusla, HSE and others.

To download all submissions, advocacy, and communications, please visit the links below:

---

[Submissions](#)

[Advocacy](#)

---

### Submission on Adult Safeguarding

All adults regardless of their address, including those in residential care services, should have equal and rights-based access to all primary care health and social care services. In a submission on Adult Safeguarding made to the Oireachtas Committee on Health in November, the IASW warned that adults are "falling through the cracks" and urged the Government to legislate and adequately resource an independent statutory social work authority for all adults at risk of abuse or neglect. The submission called on the government to fully enact the Adult Safeguarding Bill 2017 and to commence the Assisted Decision Making (Capacity) Act 2015. The IASW Position Paper on Adult Safeguarding and the submission to the Oireachtas Health Committee can be found on the "Submissions" link above.

---

## Representations

The IASW is invited to participate in many advisory, expert review and focus groups. We also receive invitations to a wide variety of events. In addition, we also meet with CORU, Tusla, Ministers, Government Departments and the media.

### List of representations since October - December 2020

1. Changing Horizons in Gerontology: Improving Bone Health in Older People Confirmation
  2. Dialogue Between Alliance Members and Bernard Gloster, CEO of Tusla
  3. Public Consultation Notice: CORU Draft Statement of Strategy 2021 – 2025
  4. From Child to World Citizen: But What Kind of World?
  5. Member Dialogue with Tusla
  6. ICCL AGM 2020
  7. Age Action 27th AGM
  8. Mental Health Reform, LGBT Ireland, and BeLonG To
  9. Investing in a Green Future – Ireland's Transition to a Green Economy
  10. CORU Research to Understand the Impact of COVID-19 Restrictions on the Ability of Education Institutions to Meet the Statutory Obligation Regarding Practice Placements
  11. Webinar: Putting Care at the Heart of Europe – Towards a European Care strategy
  12. Using Words That Work - INAR Membership Webinar
  13. Access to Justice: Reform of the Family Courts
-



---

National Social Work Organisation of Ireland Limited | Trading as Irish Association of Social Workers  
St. Andrews Resource Centre, 114-116 Pearse Street, Dublin 2, Tel: 06 024 1055  
<https://www.iasw.ie/> administrator@iasw.ie

